



BIOTHERM

**Total body care**  
for a totally beautiful body



## **Ultra-moisturising cleansing**

Gentle exfoliation, smoothes and softens

# Body moisturising

Renowned for its nourishing properties, indulge yourself in the moisturising power of a milk bath with the complete Lait Corporel range.



## Lait De Douche

- Milky-soft **shower cleanser**.
- Soap-free, enriched with extra-moisturising oils.
- Delicately scented with energising citrus essences.

With just one dab, skin is perfectly cleansed and protected from dryness.



## Lait De Gommage

- Ultra-creamy, soap-free **emulsion scrub**.
- Gently yet effectively exfoliates away surface cells to reveal radiant skin.
- Gentleness of a body milk, formulated like a skincare product with an energising scent.

For satin-smooth skin without drying and a feeling of feather-light softness.



**Sublimely renowned  
moisturising**

Luxuriously nourishing bath

# Body moisturising



## Lait Corporel

- Biotherm's legendary **body moisturiser**.
- Anti-dryness agents and regenerating Pure Thermal Plankton.
- Scented with refreshing and comforting citrus.

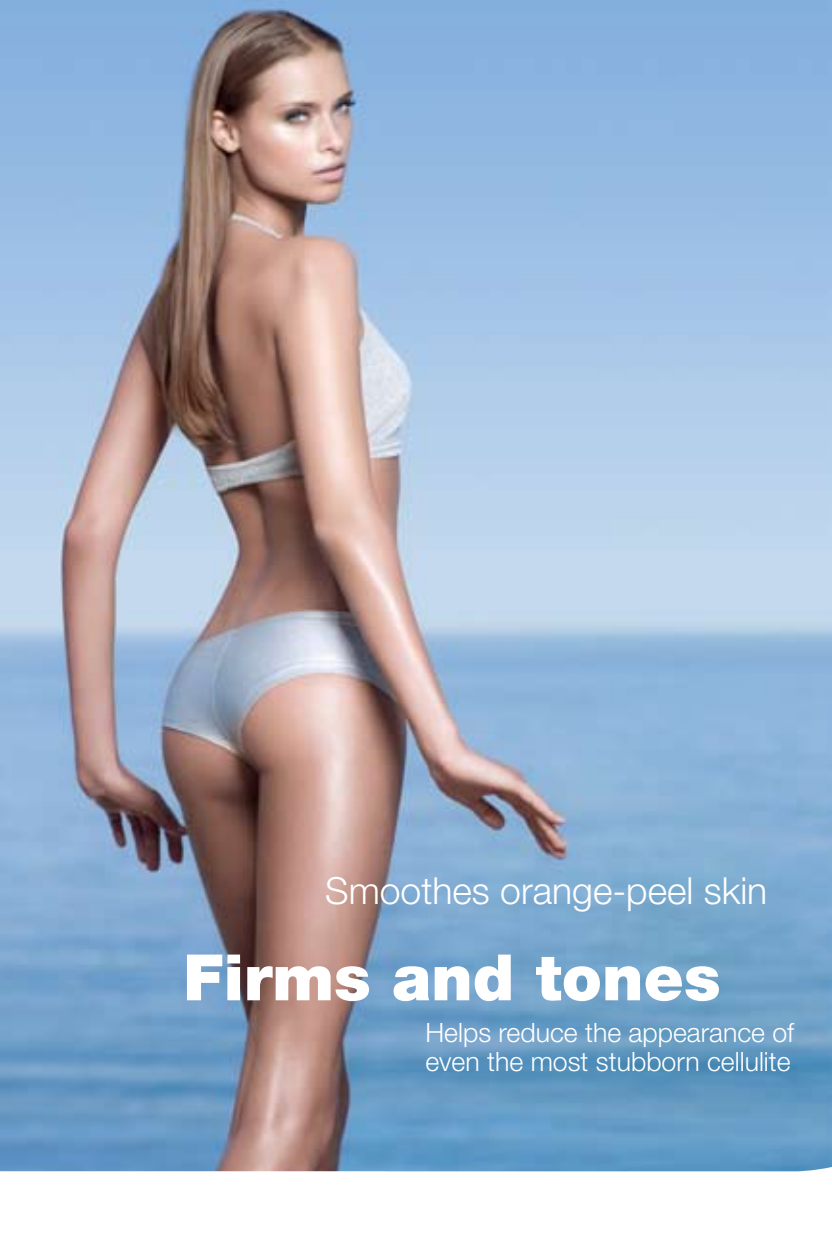
Absorbs quickly to perfectly moisturise skin, leaving it protected, supple and soft.



## Lait De Bain

- Transforms your bath into a **luxurious milk bath**.
- Relaxes, protects and softens the skin.
- Citrus scent uplifts and revitalises.

Envelops your body in nourishment and wafts of delightful fragrance.



Smooths orange-peel skin

## **Firms and tones**

Helps reduce the appearance of  
even the most stubborn cellulite

# Anti-cellulite



## Celluli Laser™ Biofibrine

### 10 days to track down cellulite

Celluli Laser™ Biofibrine helps defeat all visible signs of cellulite, even the most stubborn, with laser-like precision. Smooth away orange-peel skin, target hardened collagen fibres that aggravate the appearance of cellulite, and re-contour your body.

#### For visible results on 3 cellulite markers in just 10 days\*:

- 71% of women experienced measurable loss from upper thighs and hips.
- Orange-peel skin is visibly smoothed.
- Skin firmness is improved.

#### In 4 weeks\*\*:

- Smoother skin 90%
- Improved skin texture 85%
- Firmer skin 75%
- Orange-peel skin smoothed 74%

For maximum results and overall efficacy against cellulite, include Celluli Laser™ Intensive Night in your body contouring routine.

\*Clinical study on 45 women conducted under the supervision of doctors and biologists. \*\*Study conducted under the supervision of dermatologists, doctors and biologists on 109 women affected with cellulite – application morning and evening for one month.



Smooths orange-peel skin

# **Tones and refines skin**

Helps reduce the feeling  
of excess fluids

# Anti-cellulite



## Celluli Laser™ Intensive Night

10 nights to hunt down cellulite

Defeat cellulite just as it is forming with Celluli Laser™ Intensive Night, Biotherm's 1st contouring night treatment that synchronises with the body's biological clock. Helps tone and refine while you sleep, for soft, velvety skin upon awakening.

For results in as early as 10 nights on 3 cellulite markers:

- 25% reduction in the feeling of excess fluids\*
- 31% reduction in orange peel skin\*\*
- Measurable loss in upper thighs and mid-thighs\*\*\*

\*Clinical score: amount of water in tissue – tested on 39 women in 10 days. \*\*Clinical score: pitch-test observation of orange-peel skin – tested on 39 women in 30 days.

\*\*\*Tests on 39 women – loss measured in 20 days.



Refines and smoothes  
**Fights ageing**

Corrects irregularities

# Targeted body care

With high-precision laser-like effectiveness, zoom in on specific body zones with expert body care treatments.



## Celluli Laser™ Scrub

- **Massage onto cellulite-prone areas** (thighs and buttocks) to stimulate the skin and **prepare it for treatment.**
- Refines and smooths skin's surface.
- Refreshes with an invigorating fragrance.

Also with gentle heating effect to maximise the penetration and efficacy of your Celluli Laser™ Biofibrine and Intensive Night treatments.



## Décolleté Laser™

- For the delicate **neck and upper chest area**, a special restructuring **age-correction action.**
- Firms, plumps and moisturises to reduce the appearance of wrinkle depth.
- Helps to prevent and fade away dark spots.

Instantly, the décolleté feels velvety-soft and smooth to the touch.



## Leg Laser™

- Restores a feeling of **lightness and comfort** to **tired, swollen legs.**
- Refreshes and soothes.
- Firms and tones.

Corrective pigments also fade away visible skin irregularities for an instant leg enhancer effect.

# The body care experts for more than 40 years

---

**1964:** the first slimming body care product.

**1972:** the body milk care that sells one bottle  
every 20 seconds.

**2009:** the first chronobiological night treatment.

With every passing year, Biotherm biologists have deepened and refined their knowledge of the body and its mechanisms. With every new and innovative solution, Biotherm has gained recognition as the avant-garde body care expert that combines high-precision products with highly-efficient results to answer the needs and concerns of women all over the world.

---